

Instant Hot Water Dispenser

Installation and Operating Guide



SKU No.

B32CU-FHA

B32CU-FHCA

Be sure to store this instruction manual in a secure location once your unit is set up. You might need to refer to it for general guidance or future maintenance.

CONTENTS

Warnings	02
Contents of Packages	03
Complete Assembly View	04
Technical Specifications	05
Icon Description Guide	06
Installation Guide	07
Function & Operation Guide	12
Maintenance	14
Trouble Shooting Guide	16

Thank You for Choosing WINTEMP!

We truly appreciate your trust in our instant hot water dispenser. It's our pleasure to bring convenience and quality to your daily routine.

If you have any questions or feedback, we're always here to help.

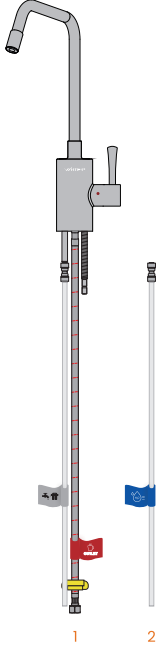

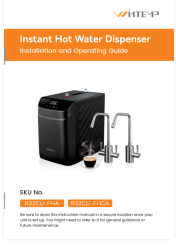
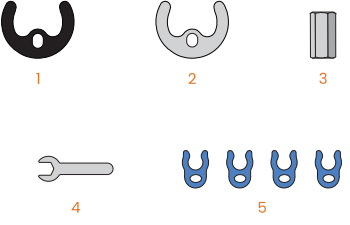
For the best experience, please follow the step-by-step instructions in the manual, we're confident you'll love the convenience of instant hot water!

Warnings

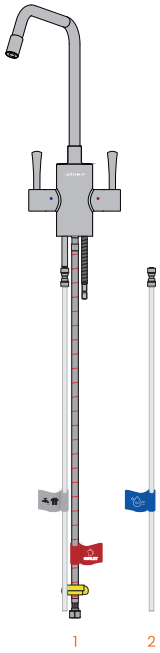

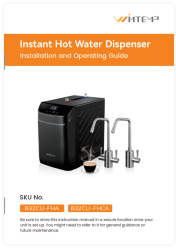
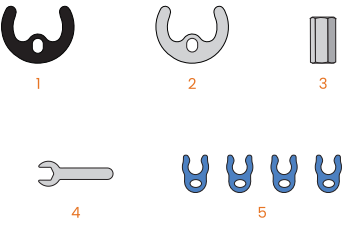
- 1. Risk of Scalding:** Dispensed water is extremely hot (boiling). Keep away from children and avoid direct contact with skin.
- 2. Electrical Safety:** Operates at 120V only. Must be properly grounded for safe operation.
- 3. Unplug Before Servicing:** Always unplug the unit from the power outlet before cleaning or maintenance.
- 4. Proper Installation Required:** To prevent leaks or damage, follow installation instructions carefully. If unsure, consult a professional.
- 5. Use Only with Cold Water Supply:** Connecting to a hot water line may damage the unit.
- 6. Do Not Block Vent/Steam Outlet:** Ensure proper airflow to avoid overheating or malfunction.
- 7. Outlet Restriction Warning:** Do not install any closed valves or shut-off devices on the dispenser outlet.
- 8. Not for Flammable Liquids:** Never dispense anything other than water.
- 9. Compliance Requirements:** Ensure all electrical and plumbing connections meet local codes and standards.
- 10. Water Quality Recommendation:** For longer product life and better-tasting water, use filtered water as the supply source.
- 11. Normal Operation Sounds:** Gentle boiling noises during heating are normal and indicate proper function.
- 12. For household use only.**

Contents of Packages

For SKU B32CU-FHA system

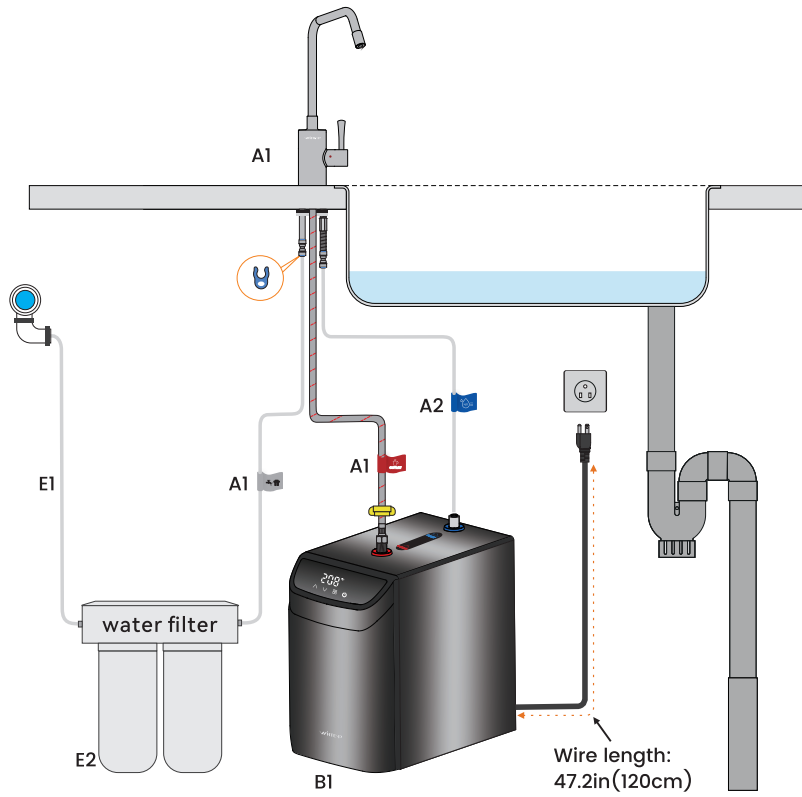
			No	Parts Name & Quantity
 <p>A</p>	 <p>B</p>	 <p>C</p>	A	A1: Hot Water Dispenser Faucet x1 (with 1 white PE tube + 1 SUS braided hose) A2: white PE water inlet tube (with 1/4-inch straight quick-connect fitting)
			B	B1: Hot Water Dispenser Unit x1
 <p>D</p>			C	C1: User Manual Book x1
			D	D1: Rubber Gasket x1 D2: Stainless Steel Washer x1 D3: Hex Nut x1 D4: Wrench x1 D5: Blue Locking Clip x4

For SKU B32CU-FHCA system

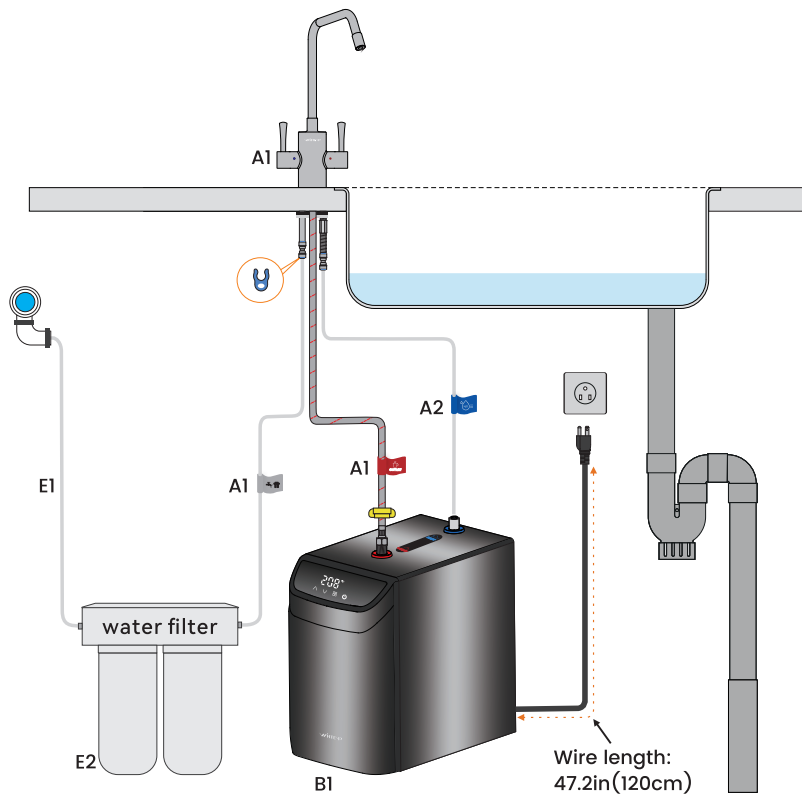
			No	Parts Name & Quantity
 <p>A</p>	 <p>B</p>	 <p>C</p>	A	A1: Hot Water Dispenser Faucet x1 (with 1 white PE tube + 1 SUS braided hose) A2: white PE water inlet tube (with 1/4-inch straight quick-connect fitting)
			B	B1: Hot Water Dispenser Unit x1
 <p>D</p>			C	C1: User Manual Book x1
			D	D1: Rubber Gasket x1 D2: Stainless Steel Washer x1 D3: Hex Nut x1 D4: Wrench x1 D5: Blue Locking Clip x4

Complete Assembly View

For SKU **B32CU-FHA** system



For SKU **B32CU-FHCA** system











Technical Specifications

Products Name	Hot Water Dispenser Unit
Model No.	B32CU
Voltage	110V-127V~ 50/60Hz
Wattage	1300W
Temp. Setting	113°F - 208°F
Working Temp.	50°F - 110°F
Capacity	0.85gal / 3.2L
First Heating Time	Approx.10 minutes
Max. Water Flow	6.34gal / Hour; 24L / Hour
Pressure	0psi / 0MPa
Water Pressure	21.76-87psi / 0.15-0.6MPa
Water Flow	0.53GPM / 2LPM
Water Proof	IP22
Tank Material	SUS304

Products Name	Hot Water Dispenser Faucet	Hot & Cold Water Dispenser Faucet
Model No.	FHA	FHCA
Faucet Hole Size	1.1 in(28 mm) - 1.26 in (32 mm)	
Working Temp.	113°F - 208°F	
Material	SUS304	

Icon Description Guide

Icon	Name	Function Description
	ON/OFF	Turns the dispenser on or off.
	Switch Button	Switches temperature display between °C and °F.
	Up Button	Increases the set temperature.
	Down Button	Decreases the set temperature.
	WiFi Indicator	Solid light =connected. Flashing =pairing. Hidden =no WiFi connection.
	Temp. Display	Shows real-time water temperature. In setting mode, shows the target temperature.
	Child Lock	Child lock is on: all buttons are disabled. Turn it off to use functions again.
	Heating Light	Illuminates while the unit is heating.

Installation Guide

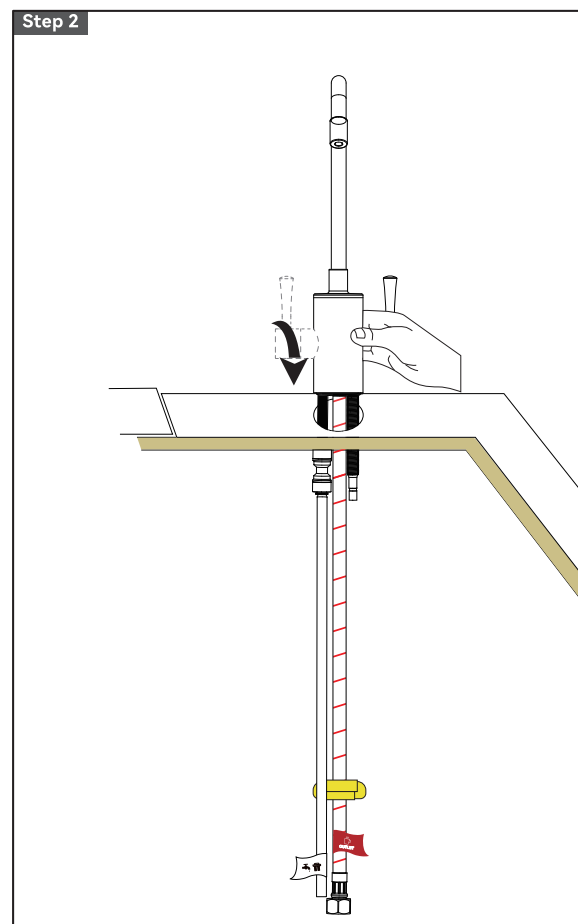
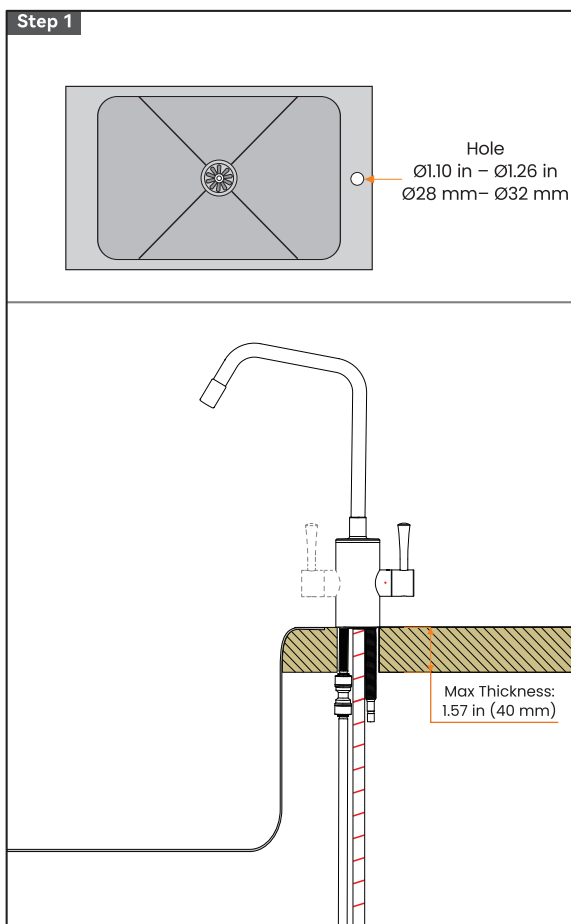
Before installing the product, open the packaging and check the packing list in the instructions to make sure you have all the parts!

Step 1: Drilling the Hole

- If your countertop already has a hole: Make sure its diameter is between 1.1 inches (28 mm) and 1.26 inches (32 mm).
- If you need to drill: Use the correct-sized drill bit to create a hole with a diameter between 1.1 inches (28 mm) and 1.26 inches (32 mm).
- **Note:** Your countertop thickness cannot exceed 40 mm (1.57 inches). If it's thicker, installation will be impossible.

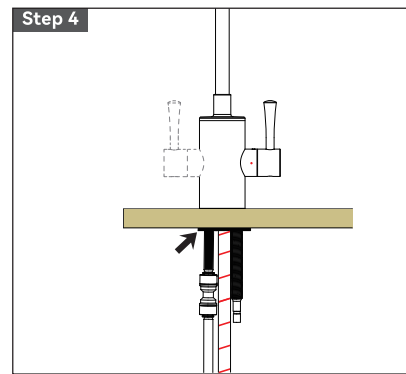
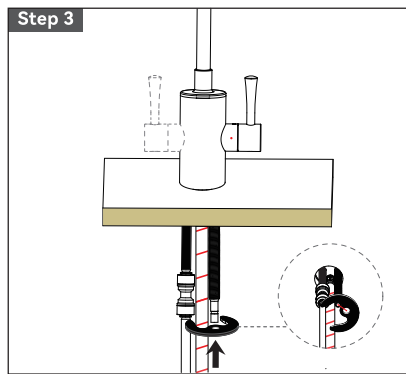
Step 2: Inserting the Faucet Body

Place the main faucet body into the hole you drilled or prepared.

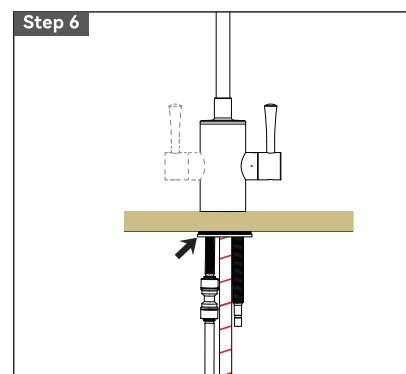
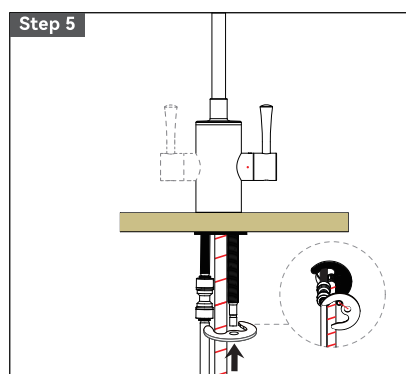


Step 3–Step 4: Fix the Faucet

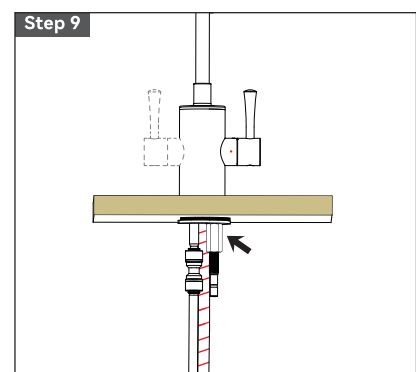
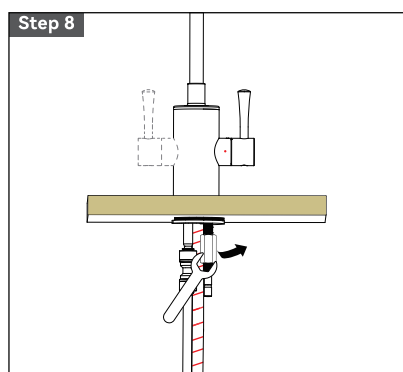
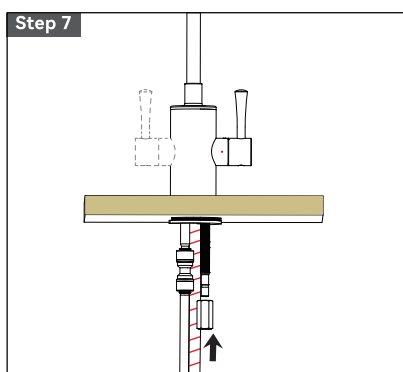
Place the faucet body flat on the countertop and secure it in the correct installation orientation. Underneath the countertop, insert the black rubber gasket into the threaded tailpiece (the pipe with threads coming down from the faucet body), aligning it with the hole. Gently push the gasket upwards until it sits flush against the bottom of the countertop. Refer to the illustration below.



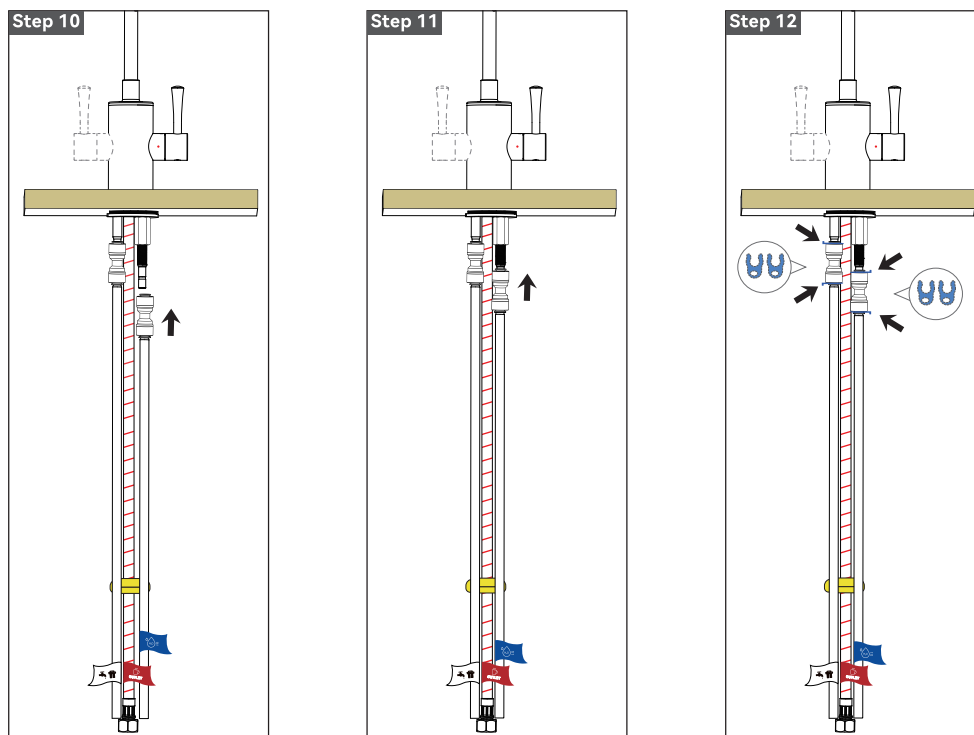
Step 5–Step 6: Slide the stainless steel washer over the threaded tailpiece using the same method described above. Refer to the illustration below.



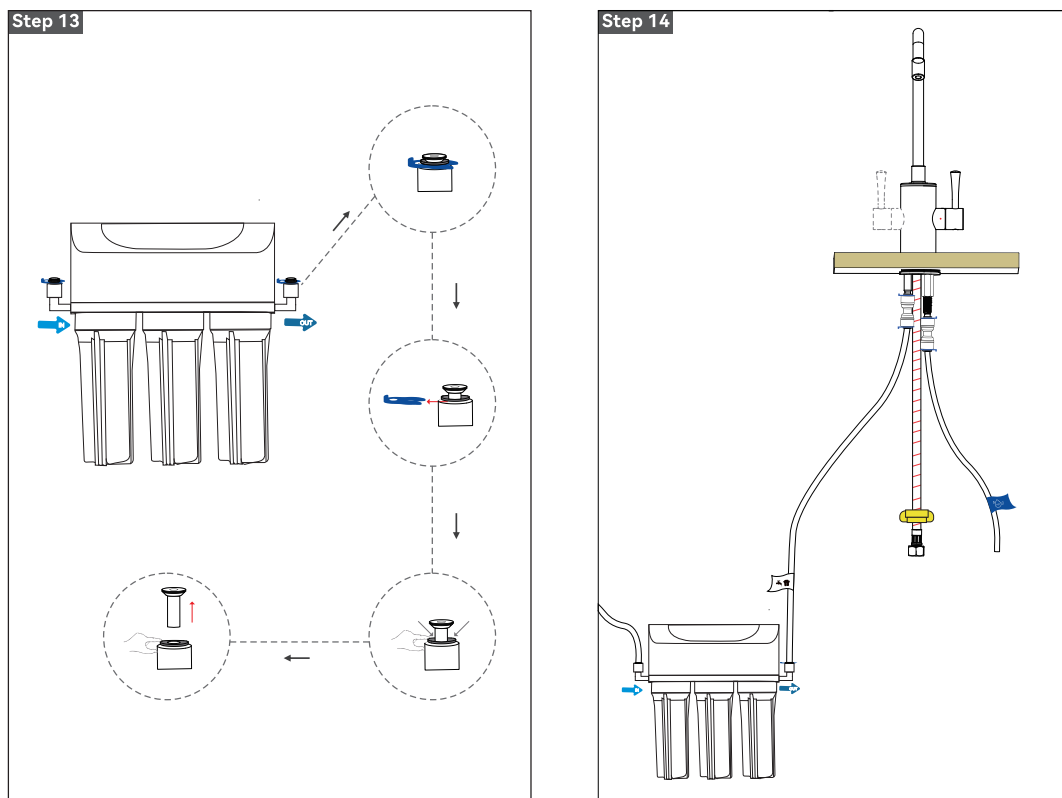
Step 7–Step 9: Thread the hex nut clockwise onto the threaded tailpiece. Use the included wrench to tighten it upwards until it's securely fastened against the washer/gasket. Refer to the illustration below.



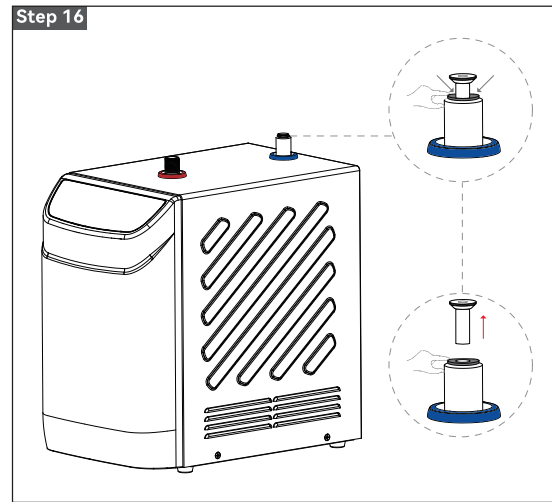
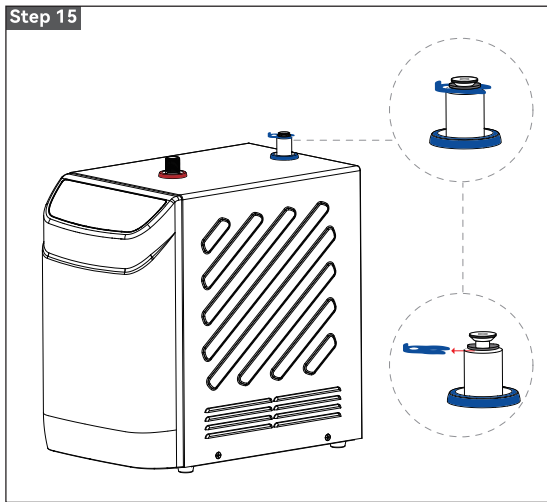
Step 10-Step 12: Connect the white PE water inlet tube to the 1/4-inch straight quick-connect fitting and secure it with the 4 pieces blue locking clips. Refer to the illustration below.



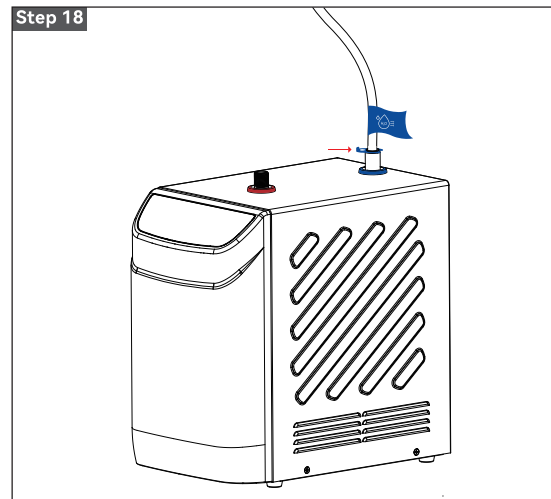
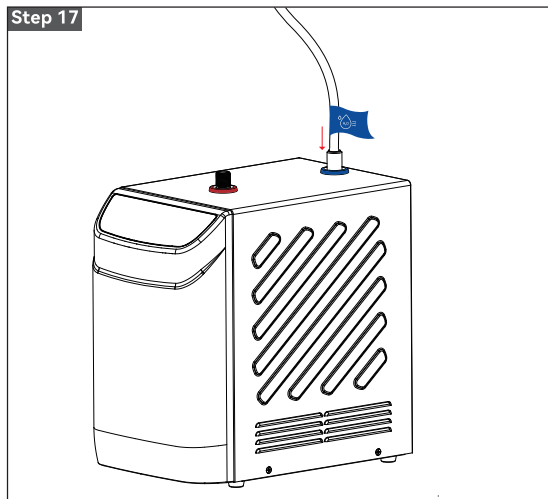
Step 13-Step 14: Connect the filtered water source to the hot water dispenser. Connect the dispenser to the outlet port of a filtration system. Pull out the Blue Locking Clip on the filter's outlet port, then press down the grey quick-connect ring while simultaneously pulling out the plug. Insert the white-labeled inlet tube from the faucet and secure it with the Blue Locking Clip. Refer to the illustration below.



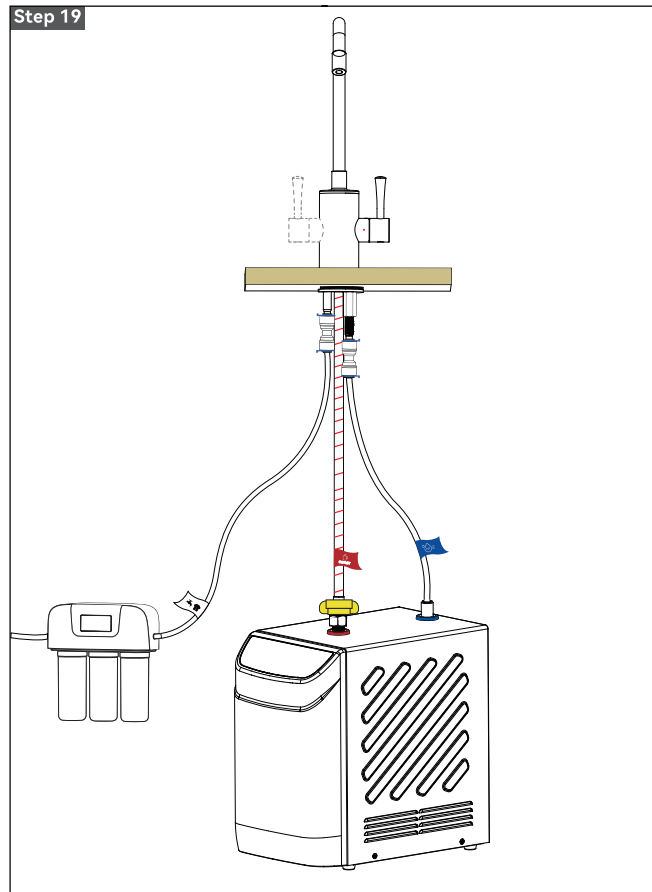
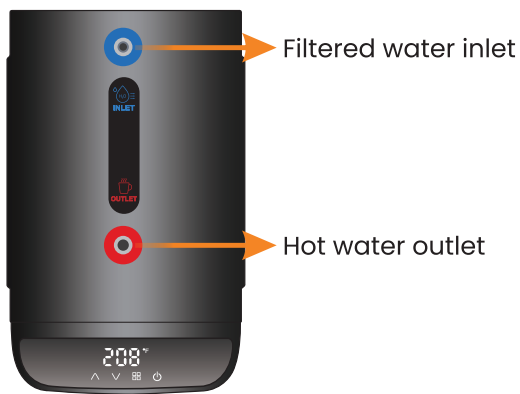
Step 15–Step 16: At the hot water dispenser unit's water inlet, pull the Blue Locking Clip outward. Then press down on the grey quick-connect fitting with your finger while simultaneously pulling the flare plug upward with your other hand. Refer to the illustration below.



Step 17–Step 18: Insert the blue-labeled tube into the “Filtered Water Inlet” on the dispenser unit. Then snap the Blue Locking Clip into place to ensure a secure connection. Refer to the illustration below.





Step 19: Thread the faucet's hot water outlet tube connector nut onto the dispenser's "Hot Water Outlet" port. Then, use the included 3/8" plastic wrench to tighten the hex nut until it is securely fastened. Refer to the illustration below.





Function & Operation Guide

Functional Description



- **Filling the Dispenser Tank:** After installing the unit, turn on the hot water faucet. (Since the inner tank is empty, no water will flow out at this point.) After approximately 2 minutes, water will start flowing from the faucet, indicating that the tank is full. At this point, turn off the faucet. The dispenser can now be plugged in and powered on.
- **Low Water Protection (Error E0):** The unit detects water level. If the tank is empty or very low, the display will show "E0" and the unit will not operate. Once the water level returns to normal, "E0" will disappear and the unit will resume normal function.
- **Screen Sleep Mode:** If you don't use the control panel for a while, the display will automatically dim to enter a screen-saver mode.
- **Settings Memory After Power Loss:** If the power goes out and comes back on, the unit will remember your previous settings (like temperature) automatically.
- **Heating Operation:** When you turn the unit on, it starts heating. The Heating Indicator  will light up. Once the water reaches your set temperature, heating stops and the Heating Indicator  turns off. If the water temperature drops 41°F(5°C) below your set point, the unit will automatically start heating again to reach the set temperature.
- **Remote Control (for App-Enabled Models):** Use the mobile app to turn the unit on or off, set the water temperature, and switch the temperature display between Celsius (°C) and Fahrenheit (°F). Note: The unit must be connected to Wi-Fi to enable remote control features.
- The faucet head is 360-degree swiveling.

Operation Instructions


1. Power ON/OFF:

- To Turn On: While the unit is OFF, press the Power Button  once.
- To Turn Off: While the unit is ON, press the Power Button  once.




2. Temperature Setting (While Unit is ON):

- **Increase Temperature:** Press the Up Button  once. The set temperature will increase step-by-step through these settings: 113°F, 122°F, 131°F, ...203°F, 205°F, 207°F, 208°F (45°C, 50°C, 55°C, ... 95°C, 96°C, 97°C, 98°C).
- **Decrease Temperature:** Press the Down Button  once. The set temperature will decrease step-by-step through these settings: 208°F, 207°F, 205°F, 203°F, ... 131°F, 122°F, 113°F, (98°C, 97°C, 96°C, 95°C, ... ,55°C,50°C,45°C).

3. Temperature Unit Switch (While Unit is ON):

Press and hold the Switch Button  to switch the display between Celsius (°C) and Fahrenheit (°F).

4. Child Lock:



- **To Lock Controls:** While the unit is either ON or OFF, press and hold the Up Button \wedge and the Down Button \vee simultaneously. The Child Lock Icon  will light up, and all panel buttons will be locked (non-functional).
- **To Unlock Controls:** While the Child Lock Icon  is lit, press and hold the Up Button \wedge and the Down Button \vee simultaneously again. The Child Lock Icon  will turn off, and the buttons will function normally.

5. Wi-Fi Setup & Control (for Models with Wi-Fi Module):

The unit can connect to your Wi-Fi network and be controlled/monitored remotely using the Tuya or Smart app on your phone. Functions include Power ON/OFF, Temperature Setting, °C/°F Switch, and checking the unit's status. (Requires an active internet connection for Wi-Fi features.)




(Scan the QR code to download the app)



6. **To Connect to Wi-Fi:** While powered off, press and hold the \vee for 5 seconds to enter WiFi setup mode. If the connection is successful, the  will stay solidly lit. When no network is available or if setup fails, the  will keep flashing. If no connection is established after 2 minutes, the flashing light will turn off.

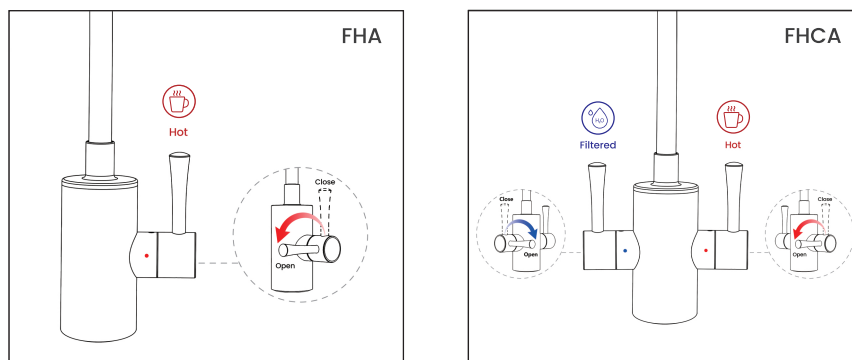
7. The operation of the faucet

For Faucet FHA:

- When the handle is vertical (pointing straight up at 90°), the faucet is in the off position.
- To activate hot water flow: Grip the right handle with your right hand and slowly turn it counterclockwise until it points to the  symbol.

For Faucet FHCA:

- The left handle controls filtered water, and the right handle controls hot water. When either handle is in the vertical (90° upright) position, the corresponding water flow is off.
- **To activate filtered water flow:** Grip the left handle with your left hand and slowly turn it counterclockwise until it points to the  symbol.
- **To activate hot water flow:** Grip the right handle with your right hand and slowly turn it counterclockwise until it points to the  symbol.



Maintenance

- **Cleaning the Exterior:** Regularly wipe the outer surface with a soft, damp cloth. Do not use corrosive cleaners or abrasive brushes, as they may damage the finish.
- **Preparing for Extended Non-Use (Draining the Unit):** If the unit will not be used for a long period, follow these steps to shut off power, disconnect water, and drain all stored water:

① **Turn Off & Cool Down:** Disconnect the power and shut off the water supply valve. Wait for the water inside the unit to cool down completely. Use the yellow plastic wrench to unscrew the red braided hose's hex socket fitting.

☒ Remove the locking clip from the drain outlet at the rear.

☒ Press the top of the drain fitting (arrow direction) and remove the flare plug.

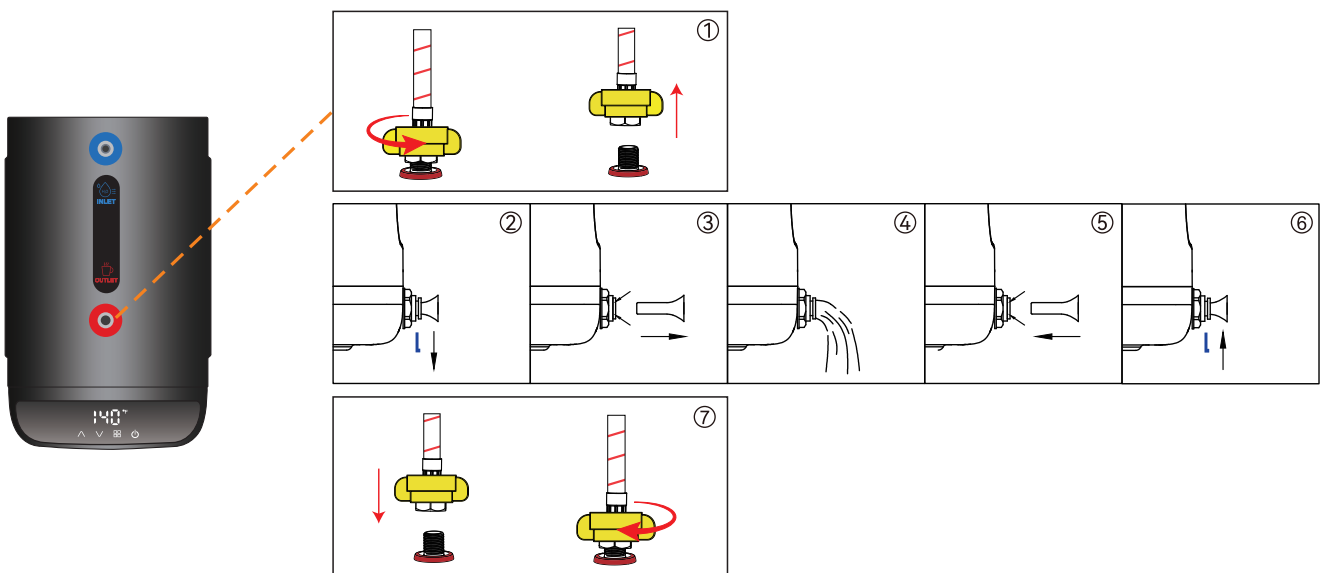
☒ **Drain the Water:** Press the top part of the drain outlet connector as indicated by the arrow, and pull out the flared plug. Place a container under the drain port to catch the water (or attach a 1/4" PE tube to drain water directly into a sink). Wait until water stops flowing from the drain port.

⑤ Reinsert the flare plug into the drain fitting.

⑥ Secure with the blue locking clip.

⑦ Use the yellow plastic wrench to tighten the braided hose back onto the hot water dispenser's outlet.

NOTE: Draining the inner tank takes approximately 2 to 3 minutes.



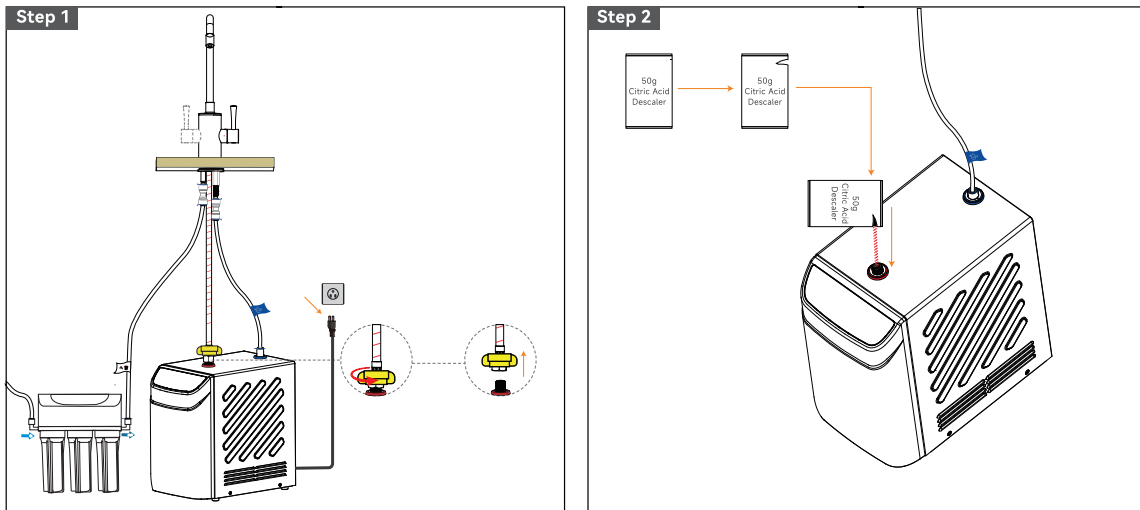
- To extend the product's lifespan and enhance its performance, we recommend cleaning the inner tank regularly (every 6-12 months) for the following reasons:

1. Removes scale buildup, improving heating efficiency and saving electricity.
2. Ensures drinking water hygiene.
3. Extends the appliance's service life.

Step 1: With the hot water dispenser's power disconnected, use the yellow plastic wrench to unscrew the red braided hose's hex socket fitting.

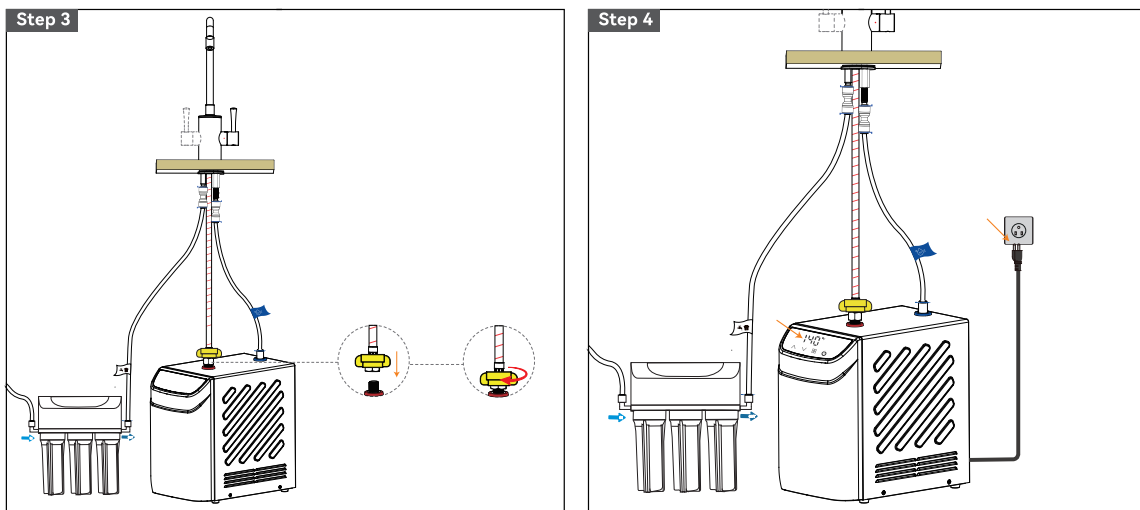
Important: Do not disconnect the hose immediately after heating, when the tank is hot. You must disconnect it only when the water temperature is low to avoid scalding.

Step 2: Prepare 50g of Citric Acid Descaler in advance. then pour it into the hot water dispenser's hot water outlet.



Step 3: After pouring in the citric acid descaler, use the yellow plastic wrench to tighten the braided hose back onto the hot water dispenser's outlet.

Step 4: Plug in the hot water dispenser and fill it completely with water. Turn on the unit and set the temperature between 140°F and 158°F. Allow the hot water dispenser to gradually heat up to the preset temperature until it automatically stops heating. Let it sit for about one hour to allow the citric acid to work inside the tank.



Step 5: Turn off the power, then drain the tank completely by following the Maintenance-Drain the Water in page 14 to remove the hot water containing citric acid.

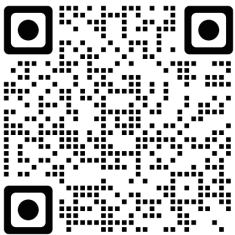
Important: After draining the tank, refill the hot water dispenser with clean water. (Refer to the Functional Description –Filling the Dispenser Tank in page 10 for detailed steps.) Keep the faucet fully open during refilling, allowing water to flow continuously for 5–6 minutes to flush out any remaining residue. Then close the faucet and resume normal heating operation.

Troubleshooting Guide

Fault	Possible Cause	What To Do
The screen is off.	The power supply is not connected.	Verify that the power cord is securely plugged in.
	The adapter has no power output.	Check or replace the power adapter.
	The display or PCB board is damaged.	Replace the display panel or PCB board.
E0	Water supply is not connected.	Make sure the water source is properly connected.
	Water level is low.	Turn the hot water tap until water flows steadily from the faucet.
E3	Middle temperature sensor short circuit or open circuit.	Inspect the middle temperature sensor wiring.
		Replace the middle temperature sensor if necessary.
E4	Top temperature sensor short circuit or open circuit.	Check the top temperature sensor connection.
		Replace the top temperature sensor if faulty.
EU	Flat Flexible Cable is Not Properly Connected or Communication Failure.	Securely reconnect the FFC (Flat Flexible Cable) or replace the FFC.

Our official website address
www.wintempshop.com

Install QR code



To obtain the benefit of this warranty, please email
[**support@wintempshop.com**](mailto:support@wintempshop.com).
We will address your issue as soon as possible!